



Outside Air Kit OSAK-125



One of the most common applications that need outdoor air are split systems that operate in the 3-10 ton performance point. Our Models TD-125 meets the air flow rate and cfm/watt requirements of the IECC 2015 Code Section R403.6.1. When the requirements of the IECC 2015 Wholehouse Mechanical Ventilation System must be met S&P's OSAK-125 Outside Air Kit is the simplest, most economical solution.

IEEC 2015 Code Section 403.6 Requirements

IEEC 2015 Code Section 403.6 (Mandatory)

The building shall be provided with ventilation that meets the requirements of the international residential code or the international mechanical code as applicable or with other approved means of ventilation. Outdoor air intakes and exhaust shall have automatic or gravity dampers that close when the ventilation system is not operating.

IECC 2015 Section R403.6.1 Whole House Mechanical Ventilation System Fan Efficacy

Mechanical ventilation system shall meet the efficacy requirements of table R403.6.1

Table R403.6.1 Mechanical Ventilation System Fan Efficacy

FAN LOCATION	AIR FLOW RATE MINIMUM (CFM)	MIN EFFICACY (CFM/WATT)	AIR FLOW RATE MAX (CFM)
RANGE HOODS	ANY	2.8	ANY
INLINE FAN	ANY	2.8	ANY
BATH ROOM, UTILITY ROOM	10	1.4	< 90
BATH ROOM, UTILITY	90	2.8	ANY

OSAK-125 Outside Air Kit: S&P'S Solution to IECC Code Section 403.

Components



TD-125
Inline Fan



CAR
Backdraft Damper



FT247
Timer

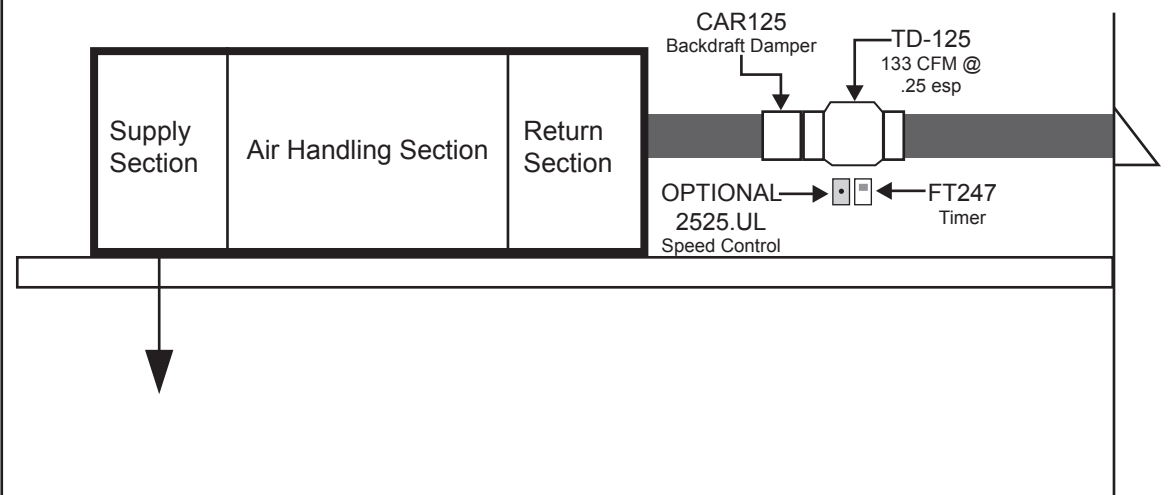
Optional



2525.5UL
Speed Control

Installation Example

(not to scale)



OSAK-125 Outside Air Kit Component Specifications

TD-125: Inline Mixed Flow Fan



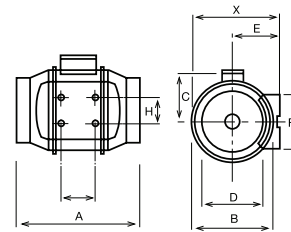
Manufactured in tough reinforced plastic with duct connection flanges manufactured from reinforced plastic. Impeller blades molded in tough ABS plastic. Motor has Class B Motor Insulation. The entire TD-125 has a 5-year warranty.

Performance

Model	Nom. RPM	Volts	Max. Watts	CFM v Static Pressure (SP) Ins. WG							CFM/Watt @ .25 esp	Duct Dia. Ins.
				0"	0.125"	0.25"	0.375"	0.5"	0.75"	1.0"		
TD-125	2146	120	38	197	168	133	86	22	-	-	2.8	5"

Dimensions inches/mm

Model	X	A	B	C	D	E	F	G	H
TD-125	7 3/8 188	10 3/16 258	6 15/16 176	4 1/2 115	4 13/16 123	3 15/16 100	3 9/16 90	3 1/8 80	2 3/8 60



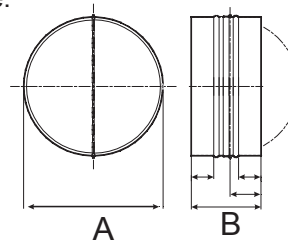
CAR125: Steel Backdraft Damper



Backdraft dampers are designed with galvanized steel collars and have lightweight aluminum damper blades. They are spring loaded for positive closure.

Dimensions in mm/inches

Model	A	B	Wgt. (lbs)
CAR-125	125 4 15/16	100 3 15/16	1



FT247: Programmable Fan Timer (24 Hour/7 Day)



White. 24 hour - 7 day programmable wall box time switch provides 7 ON and 7 OFF events. LCD display, slim design, with rechargeable battery back-up. Push button activation. Note: Do not use with fluorescent lamp ballasts

Specifications

Maximum Time Setting	168 hr.
Mode of Activation	Push Button
Mounting Style	Wall Box
Reset Type	Automatic
Switch Configuration	SPST
Contact Position	OFF
Power	1 hp
Voltage	120 V
Frequency	60 Hz
Current	15 Ams
Approvals	cUL UL
Hold Option	Yes
Dial or Wall Plate Option	Yes
Color	White