



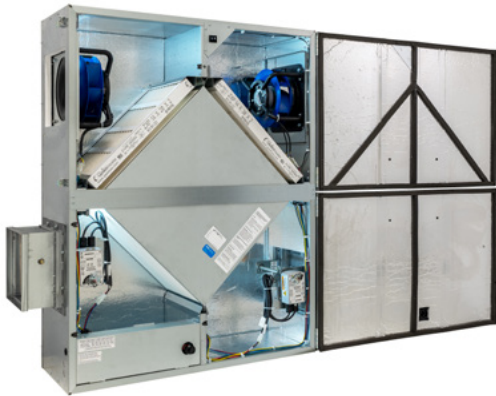
TRCeN
500-230

TRCeN500-230, TRCeN500V-230

ENERGY RECOVERY VENTILATOR
EC MOTOR



INDOOR UNIT



Energy recovery core is AHRI Certified®



SPECIFICATIONS

Ventilation Type: Static plate, heat and humidity transfer

Airflow Range: 166–488 CFM

AHRI 1060 Certified Core: One L85-G5

Standard Features:

- Non-fused disconnect
- 24VAC transformer/relay package
- Cross-core differential pressure ports
- Independent blower control

Filters: Total Qty. 2, MERV 8: 14" x 20" x 2"

Unit Weight: 148 lbs.

Max. Shipping Dimensions & Weight (on pallet):

- 60" L x 30" W x 55 1/4" H
- 205 lbs.

Motor(s):

- Qty. 2, 170W ea., Direct drive EC motorized impeller packages (208–230V/1Ph/60Hz)

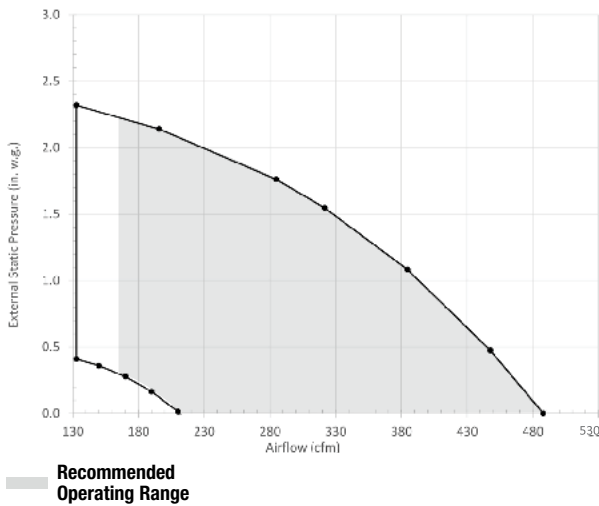
Optional Electrical Accessories:

- STC7D-W: Digital Time Clock (wall mount)
- SMC-C: Motion Occupancy Control (ceiling mount)
- SMC-W: Motion Occupancy Control (wall mount)
- SCO2-W: CO2 Control (wall mount)

Optional TRCeN General Accessories:

- 147594: Bracket Hanging Kit
- 147595: Vibration Isolator, Hanging, 50 lbs.
- 147596: Vibration Isolator, Hanging, 70 lbs.
- 147599: TRCeN500 Flange Kit Rect 12" x 12"
- 990080: MERV8 14" x 20" x 2" filter (single)
- 990091: MERV8 14" x 20" x 2" filter (case of 12)
- 990300: MERV13 14" x 20" x 2" filter (single)
- BD8: 8" Backdraft Damper
- BD10: 10" Backdraft Damper
- FA8-G: 8" Galvanized Wall Cap
- FA8-P: 8" Galvanized Wall Cap
- FA10-G: 10" Galvanized Wall Cap
- FA10-P: 10" Galvanized Wall Cap
- VT8: 8" Taupe Weatherhood
- VW12X8: Louver, 8" Round Duct Connection

EC MOTOR OPERATING RANGE AND FAN PERFORMANCE



| Airflow (CFM) | External Static Pressure (Inches Water Column) | Unit Power Consumption (Watts) |
|---------------|--|--------------------------------|
| 133 | 2.32 | 278 |
| 196 | 2.14 | 323 |
| 285 | 1.76 | 383 |
| 322 | 1.55 | 402 |
| 385 | 1.08 | 418 |
| 448 | 0.48 | 408 |
| 488 | 0.00 | 384 |

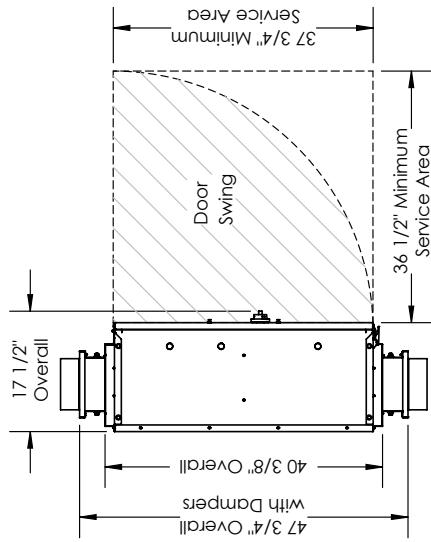
Note: Airflow performance includes effect of clean, standard filter supplied with unit.

ELECTRICAL DATA

| Max. Unit Watts/HP | Volts | Hz | Phase | Motor Full Load Amperage (FLA) per Motor | Min. Circuit Ampacity | Max. Overcurrent Protection Device |
|--------------------|---------|----|--------|--|-----------------------|------------------------------------|
| 170 | 208–230 | 60 | Single | 1.16 | 2.6 | 15 |



TRCeN500V-230 ENERGY RECOVERY VENTILATOR EC MOTOR



ABBREVIATIONS

- EA: Exhaust Air to Outside
- OA: Outside Air Intake
- RA: Room Air to be Exhausted
- SA: Supply Air to Inside

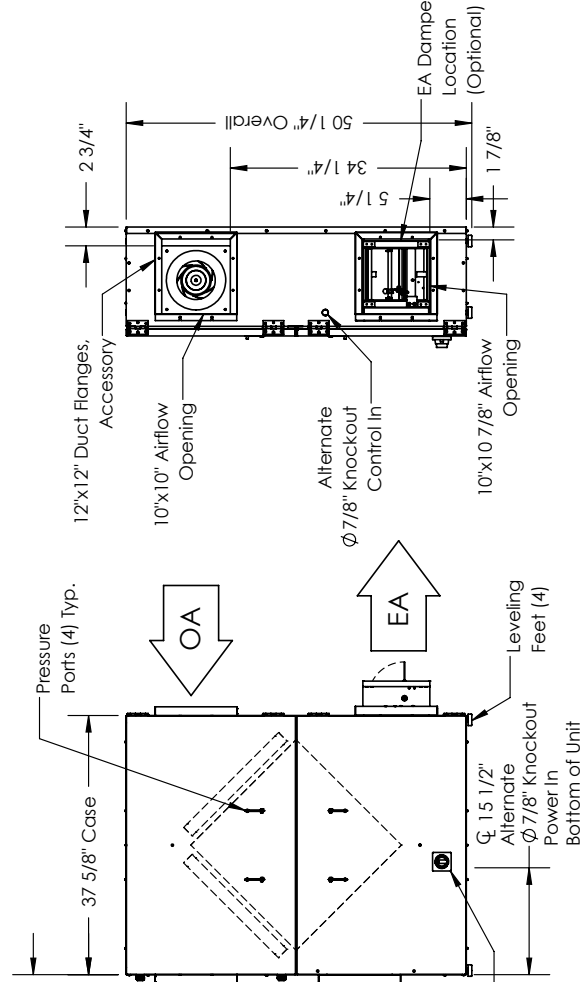
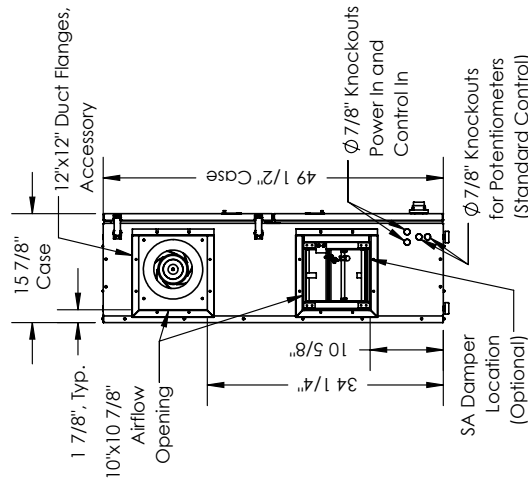
INSTALLATION ORIENTATION

Unit may be installed in any orientation.

NOTE

1. UNLESS OTHERWISE SPECIFIED, DIMENSIONS ARE ROUNDED TO THE NEAREST EIGHTH OF AN INCH.
2. SPECIFICATIONS MAY BE SUBJECT TO CHANGE WITHOUT NOTICE.

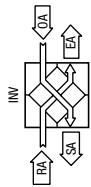
TOP VIEW



FRONT VIEW

RIGHT VIEW

LEFT VIEW



AIRFLOW ORIENTATION

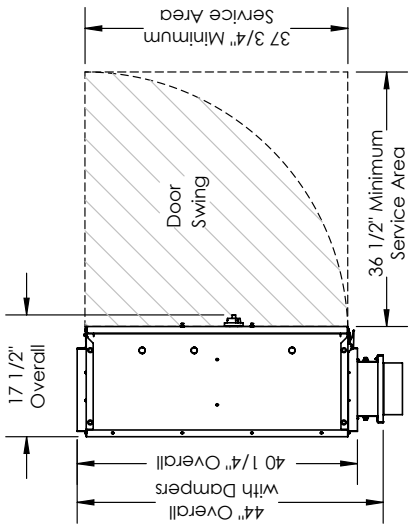
Available as shown:



UNIT MOUNTING & APPLICATION
Can be mounted in any orientation. RA/EA airstream can be switched with OA/SA airstream unless certain options are selected.



TRCeN500-230 ENERGY RECOVERY VENTILATOR EC MOTOR

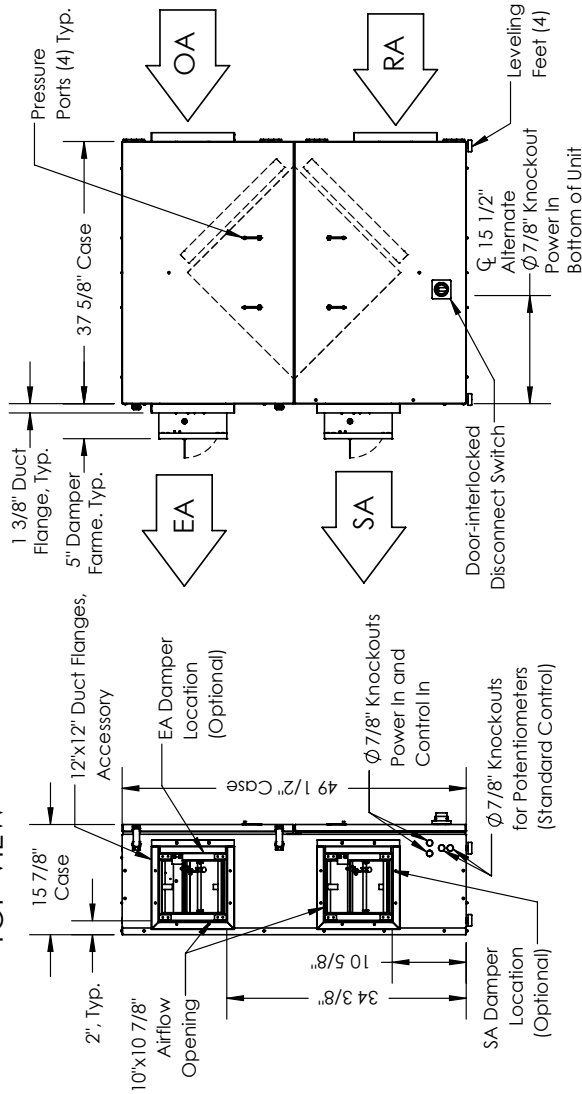


ABBREVIATIONS
EA: Exhaust Air to Outside
OA: Outside Air Intake
RA: Room Air to be Exhausted
SA: Supply Air to Inside

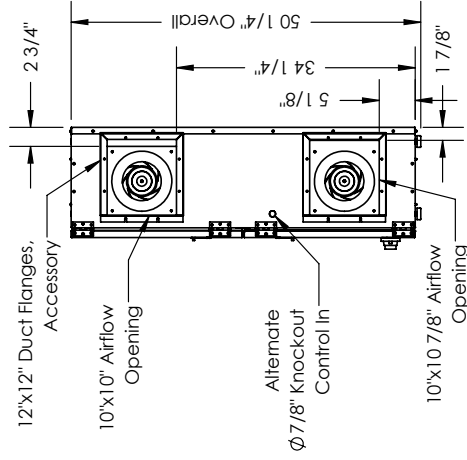
INSTALLATION ORIENTATION
Unit may be installed in any orientation.

NOTE
1. UNLESS OTHERWISE SPECIFIED, DIMENSIONS ARE ROUNDED TO THE NEAREST EIGHTH OF AN INCH.
2. SPECIFICATIONS MAY BE SUBJECT TO CHANGE WITHOUT NOTICE.

TOP VIEW

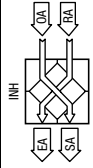


LEFT VIEW



RIGHT VIEW

FRONT VIEW



AIRFLOW ORIENTATION
Available as shown:



UNIT MOUNTING & APPLICATION
Can be mounted in any orientation. RA/EA airstream can be switched with OA/SA airstream unless certain options are selected.