



MODEL ACF48

Agricultural Circulating Fan



FEATURES

- Galvanized steel construction for long lasting corrosion resistance
- Permanently sealed ball bearings
- IP55 motor rating
- Mounting holes on frame
- Tested per ANSI / AMCA Standard 210-16, in an AMCA certified test facility

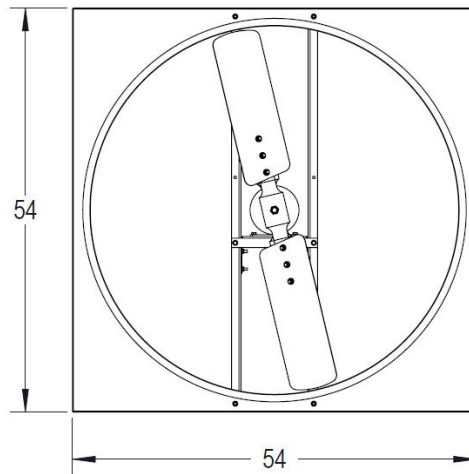
APPLICATIONS

- Poultry
- Dairy
- Greenhouse
- Commercial
- Industrial

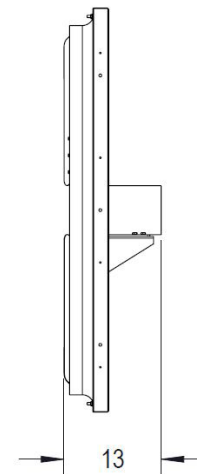
PERFORMANCE

MODEL	Blade Diameter	HP	Drive	CFM	RPM	Volts	Amps	Ph	Hz	Shaft Dia	dBA @ 7ft	Motor Enclosure
ACF48	48"	1	Direct	20,300	850	208-230/460	4.8-4.6/2.3	3	60	5/8	79	TEAO

DIMENSIONS (IN INCHES)



Front View

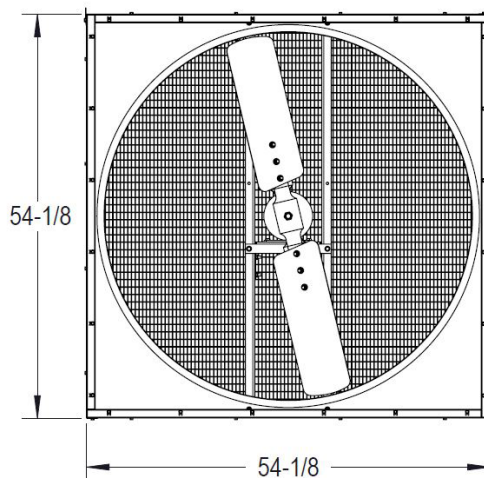
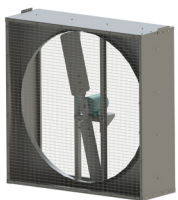


Side View

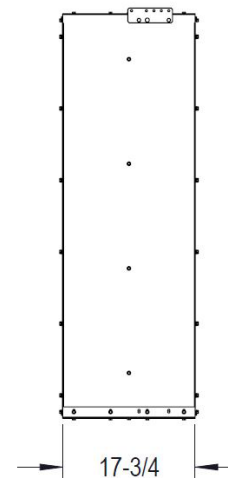
OPTIONAL ACCESSORY

Wall Box Kit

- Screens are 1/2" x 1"
- Wall Box is G-90 galvanized steel
- Hanging brackets included



Front View



Side View