



STC7D

Digital Time Clock for TRC500 & TRC800 Installation, Operation, and Maintenance Manual



READ AND SAVE THESE INSTRUCTIONS

The purpose of this manual is to aid in the proper installation and operation of fans manufactured by S&P. These instructions are intended to supplement good general practices and are not intended to cover detailed instruction procedures, because of the wide variety and types of fans manufactured by S&P.

Installation Instructions

STC7D

1. WARNINGS

READ AND SAVE THESE INSTRUCTIONS. FAILURE TO COMPLY WITH INSTRUCTIONS COULD RESULT IN PERSONAL INJURY AND/OR PROPERTY DAMAGE!



WARNING: TO REDUCE THE RISK OF FIRE, ELECTRIC SHOCK OR INJURY, OBSERVE THE FOLLOWING:

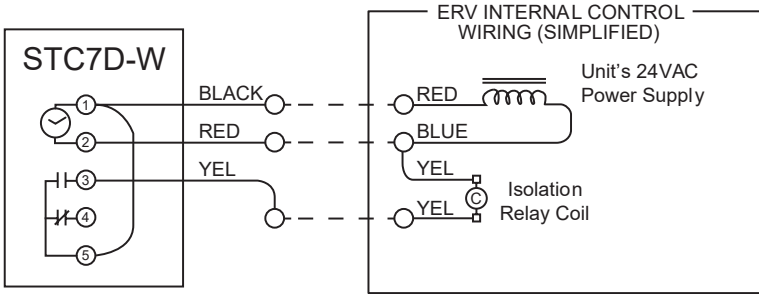
1. Use this unit only in the manner intended by the manufacturer. If you have questions, contact the manufacturer.
2. Before installing, servicing or troubleshooting the transformer/relay package, switch power off at service panel and lock service panel to prevent power from being switched on accidentally. CAUTION: more than one disconnect switch may be required to de-energize the equipment for servicing.
3. Installation work and electrical wiring must be done by qualified person(s) in accordance with all applicable codes and standards, including fire-rated construction.
4. When cutting or drilling into wall or ceiling, do not damage electrical wiring and other hidden utilities.
5. NEVER place a switch where it can be reached from a tub or shower.
6. Intended for use with 24VAC Class 2 power supplies only.
7. Do not connect loads that exceed the timer's switch rating.
8. Confirm sufficient 24VAC power is available to operate the timer and the connected loads.

2. SPECIFICATIONS

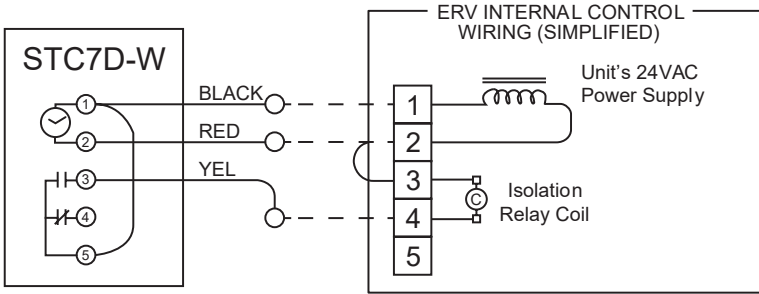
Operating Voltage	24VAC 50/60Hz
Switching	Single Pole, Single Throw [SPST] <i>(can be field-modified to Single Pole, Double Throw [SPDT])</i>
Power Consumption	3.5VA
Switch Rating	10 Amps at 131°F
Operating Temperature Range	14°F – 131°F
Connections (STC7D-W)	(3) 16 GA pigtails (wire nuts not provided)
Backup Power	Lithium battery with minimum 5-year reserve, 10-year projected life, not field-replaceable
Setting Options	<ul style="list-style-type: none">• 8 pairs of on-off time of day cycles can be programmed.• Each on-off cycle can be assigned to any one day of the week, or to the following groups of days:<ul style="list-style-type: none">• Monday – Friday; Monday – Saturday; Monday – Sunday; Saturday and Sunday.• Manual Over-ride provided by “On/Auto/Off” switch.• Program Reset button clears all settings.
Enclosure (STC7D-W)	Requires a 4” x 4” electrical box by others. Box must accommodate (4) mounting screws (see drawing). Minimum box depth 1.5”. White wall plate and mounting screws provided.

3. CONNECTION DIAGRAM

Applicable to TRC500 and TRC800 models

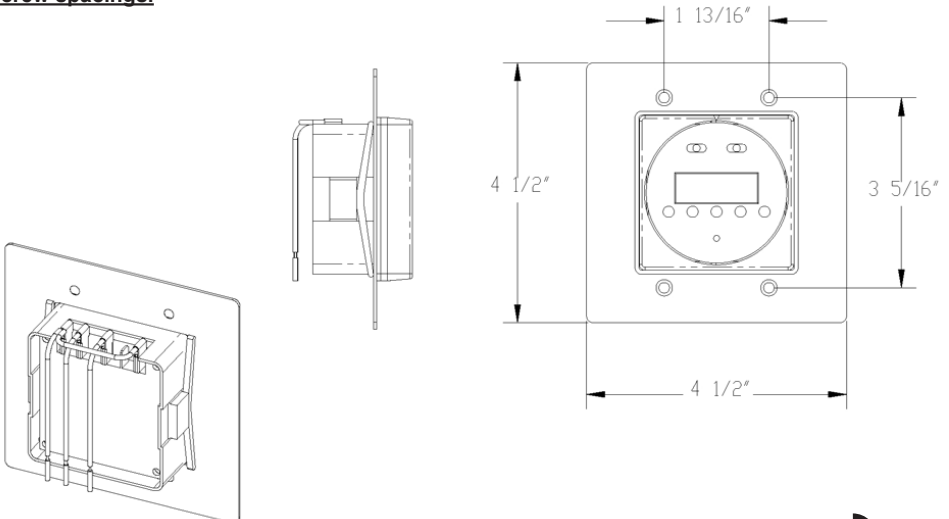


The Normally Closed contacts of one or more additional Low Voltage Controls may be connected to ERV unit in parallel with the STC&D-W.



The Normally Closed contacts of one or more additional Low Voltage Controls may be connected to ERV unit Terminals 1 & 4. Do not apply power to these terminals.

STC7D-W showing plate dimensions and screw spacings.





4. SETTING INSTRUCTIONS

Set Time and Day	Slide Set switch to ⌚ press 1...7 button until arrow points to the correct day (<i>1=Monday</i>). Press h then m buttons to set correct time. PM indicator shows noon to 11:59 PM. Slide Set switch to Run . Clock colon will blink.
Set Switch "On" Cycle	Slide Set switch to Ⓟ . A " 1 " indicates the first switch cycle and a " Bulb " indicates a switch-on (circuit closes). Press 1...7 button until arrows point to selected day(s) for this cycle. Press h and m buttons to show switch-on time, noting PM indicator.
Set Switch "Off" Cycle	With Set switch at Ⓟ , press Ⓟ button, note switch cycle number changes to " 2 " and Bulb blinks, indicating switch-off (circuit opens). Press 1...7 button to match day(s) set for switch cycle " 1 ". Press h and m buttons to select switch-off time.
Autorun	Slide Set switch to Run and Mode switch to Auto , switching begins with next switch-on set time.
Override "On"	Slide Mode switch to "I" . Switch remains on indefinitely (<i>circuit closed</i>).
Override "Off"	Slide Mode switch to "O" . Switch remains on indefinitely (<i>circuit open</i>).
Skip Cycle	In automatic run mode, press "x→" button. The next calendar day is skipped.
Setting ERROR	If EEE appears, a setting error exists. The switch cycle number in error is shown. Slide set switch to Ⓟ , press Ⓟ button until cycle is shown, review this and the following setting to correct error, slide set switch to Run .
Clear any setting	Setting slide set switch to Ⓟ , press Ⓟ button to show switch cycle to clear. Press the Ⓟ button and the skip (x) button simultaneously, hold for several seconds.
Clear All	To erase all settings, Press "R" .



S&P USA Ventilation Systems, LLC

6393 Powers Avenue
Jacksonville, FL 32217
T. 904-731-4711 • F. 904-737-8322
www.solerpalau-usa.com

S&P Canada Ventilation Products, Inc.

6710 Maritz Drive Unit #7
Mississauga, ON L5W 0A1 - Canada
T. 416-744-1217 • F. 416-744-0887
www.solerpalaucanada.com

